

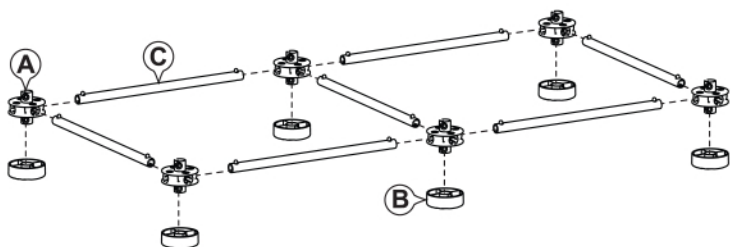
**DO NOT RETURN THIS UNIT TO THE STORE** Please make sure you have all parts prior to assembly.

All SportPet® products include a 6-month limited manufacturer's warranty for defective or missing parts. If any parts are missing or damaged please email our friendly customer service center at [info@sportpet.com](mailto:info@sportpet.com).

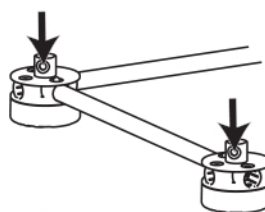
**TOUGH TO PUT TOGETHER SO IT'S EVEN TOUGHER FOR YOUR CAT TO POUNCE APART!**

**Step 1**

Assemble base using **Joints (A)**, **Feet (B)** and **Pipes (C)** as shown. \*Look at **TIPS** below construction for successful assembly tricks!



**TIP A**



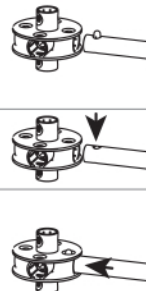
Make sure holes in **Joints (A)** are all facing the same direction.

**TIP B**

Face metal button upwards on **Pipe (C)**.

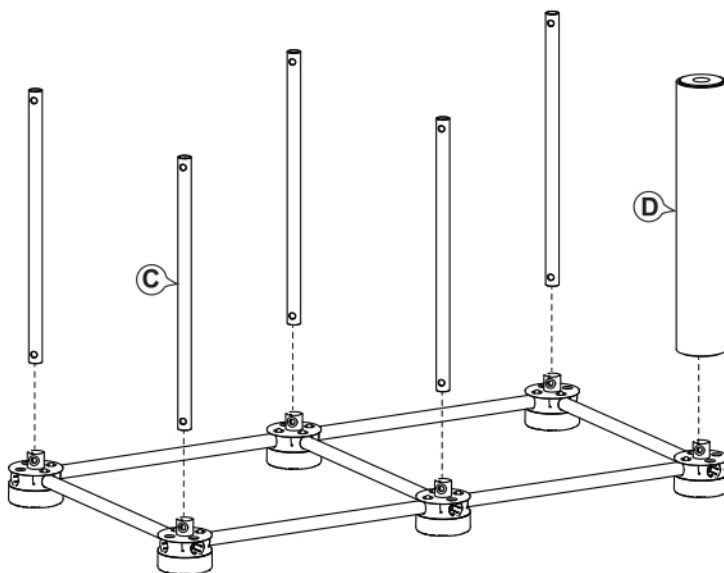
Press down on metal button in **Pipe (C)**.

While holding down metal button in **Pipe (C)** push pipe into **Joint (A)**. When the metal button pops through the hole in the joint, the parts are locked together correctly!



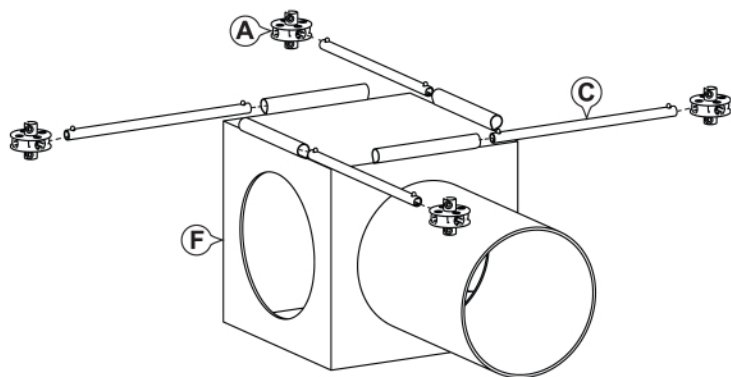
**Step 2**

Insert **Pipes (C)** and **Post (D)** into base as shown.



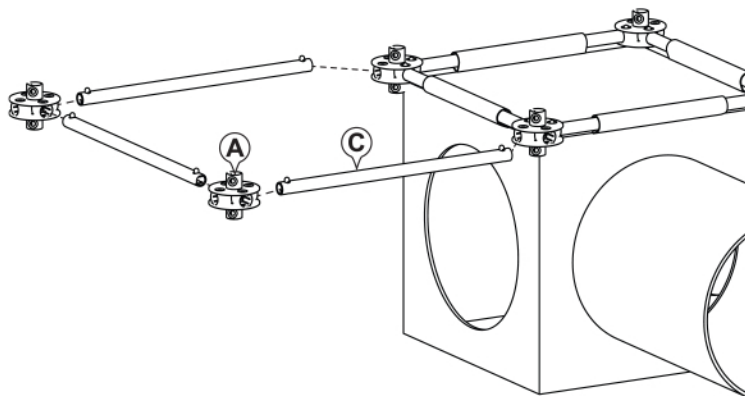
**Step 3**

Using **Cube with Tunnel (F)** slide **Pipes (C)** through sleeves. Insert **Pipes (C)** into **Joints (A)** as shown.



**Step 4**

Insert **Pipes (C)** into **Joints (A)** as shown.



**TIP A**

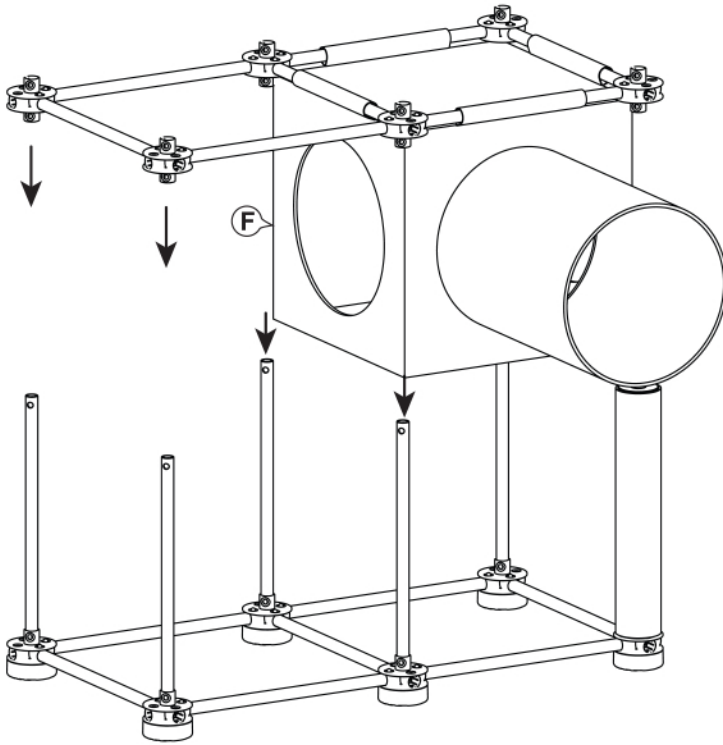
Ensure all holes in **Joints (A)** are oriented the same way as joints in Step 1.

**TIP A**

Ensure all holes in **Joints (A)** are oriented the same way as joints in Step 1.

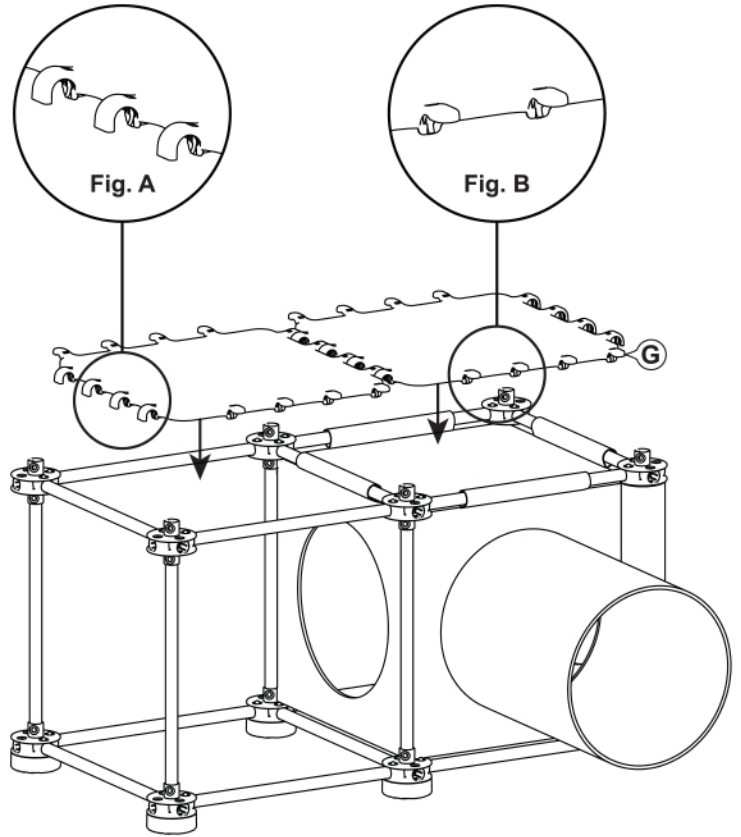
### Step 5

Attach **Cube with Tunnel (F)** to completed structure.  
Insert **Pipes (C)** into **Joints (A)** as shown.



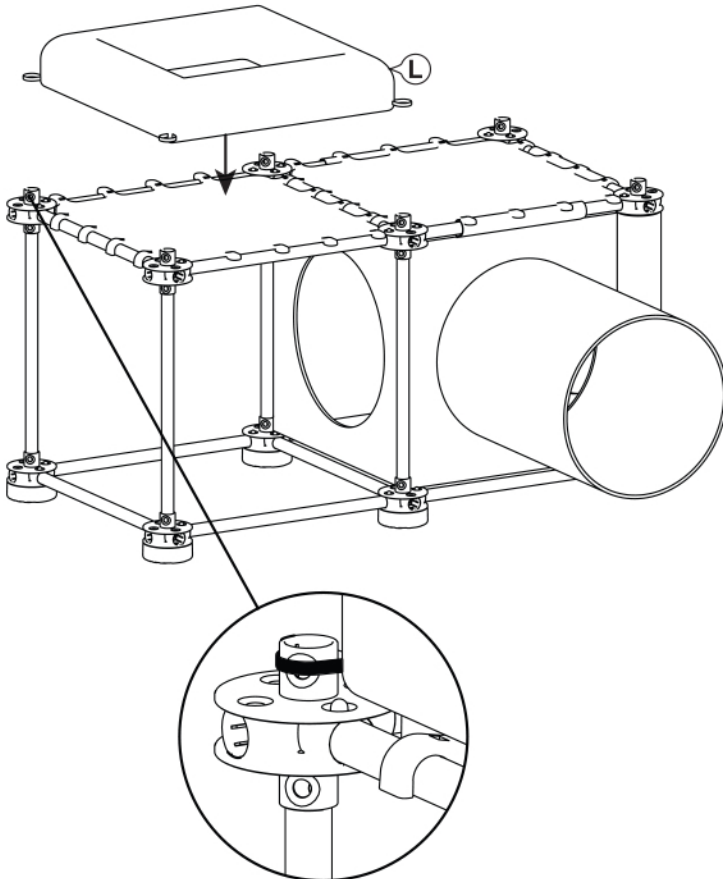
### Step 6

Snap **Panels (G)** onto frame as shown. Make sure to orient the panels so all of the **Clips (Fig. A)** and **Fingers (Fig. B)** are in the same direction. This will make it easier to assemble the rest of the item.



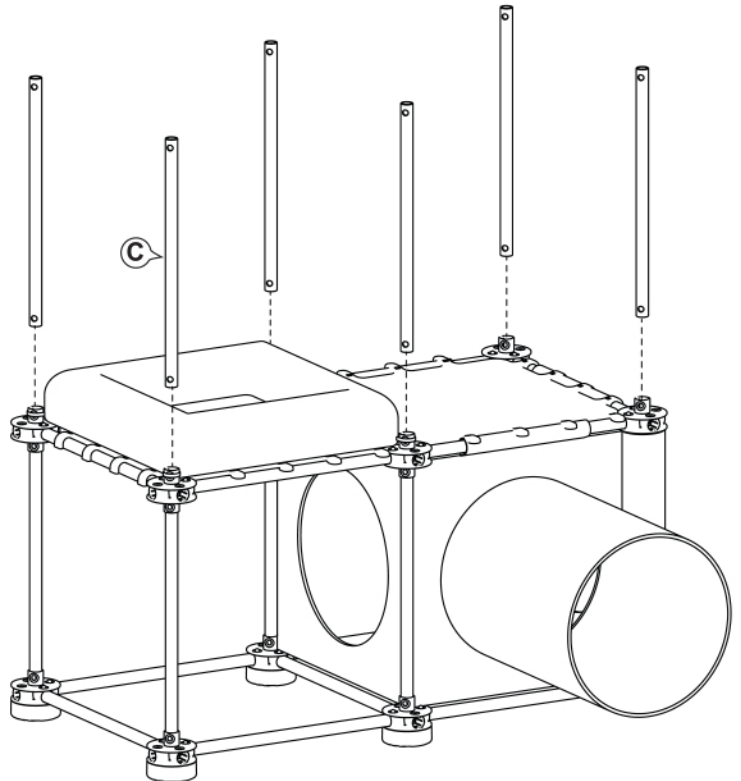
### Step 7

Attach **Fleece Bed (L)** to top of completed structure.  
Wrap corner elastic loops over tops of **Joints (A)** as shown.



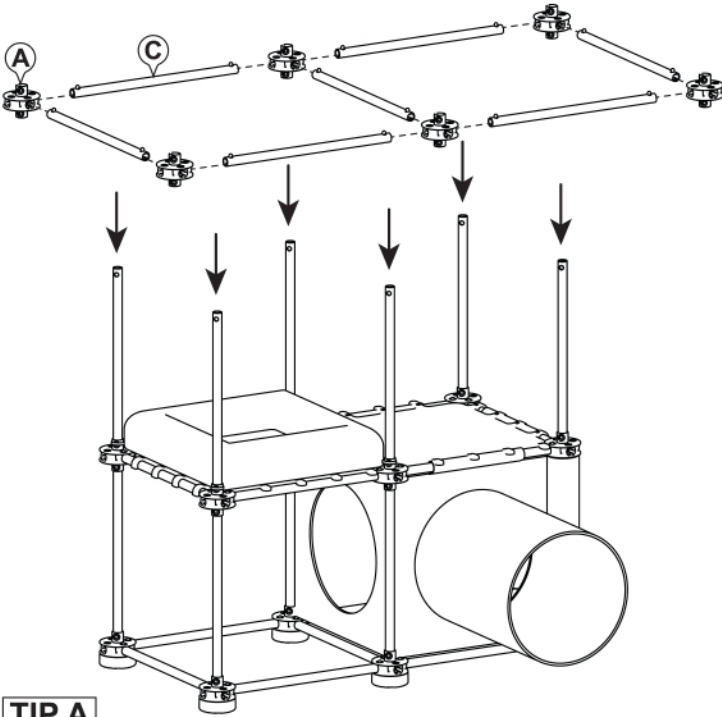
### Step 8

Insert **Pipes (C)** into **Joints (A)** as shown.



## Step 9

Insert **Pipes (C)** into **Joints (A)** and attach to main structure as shown.

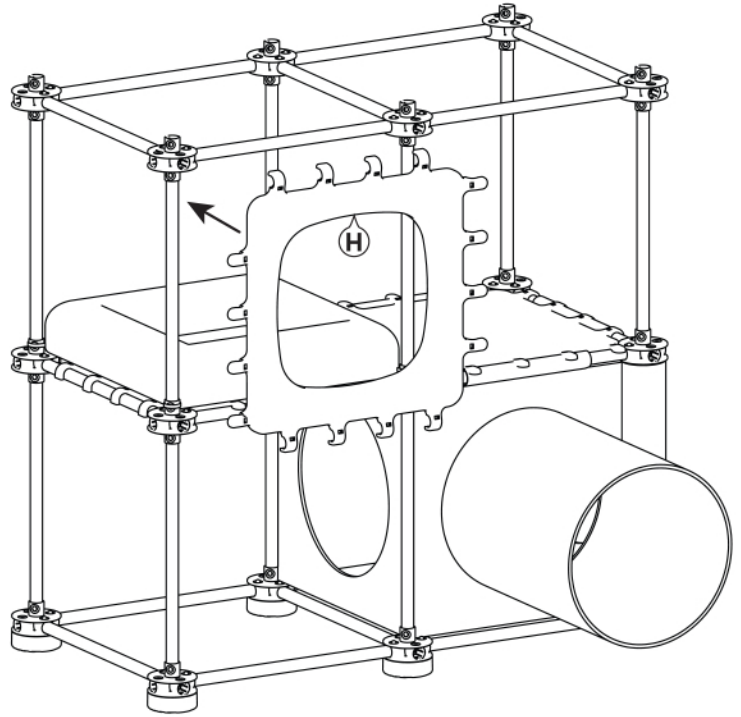


### TIP A

Ensure all holes in **Joints (A)** are oriented the same way as joints in Step 1.

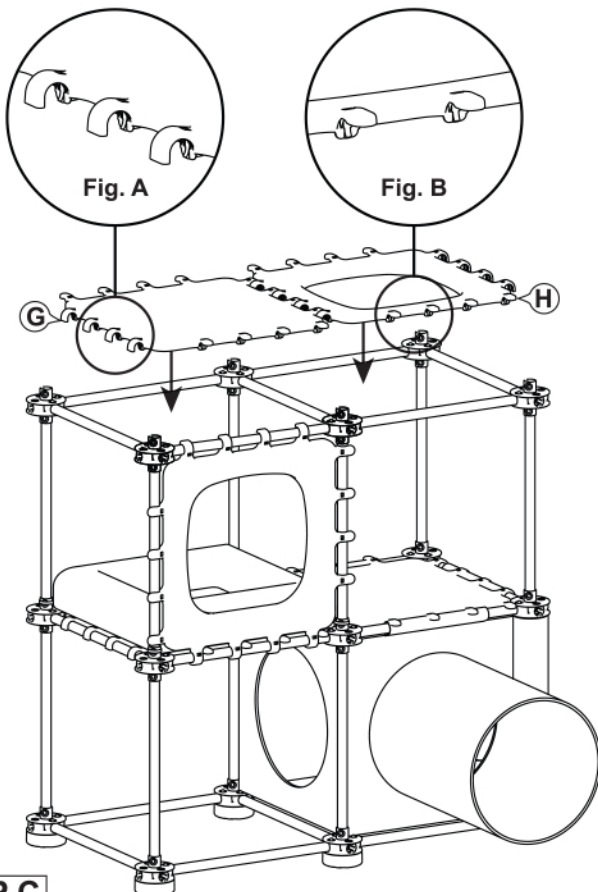
## Step 10

Snap **Panel with Opening (H)** onto frame as shown. If the panels from Step 6 interfere with this panel in any way, simply rotate this panel 90 degrees and attach to the frame



## Step 11

Snap **Panels (G&H)** onto frame as shown. Make sure to orient the panels so all of the **Clips (Fig. A)** and **Fingers (Fig. B)** are in the same direction. This will make it easier to assemble the rest of the item.

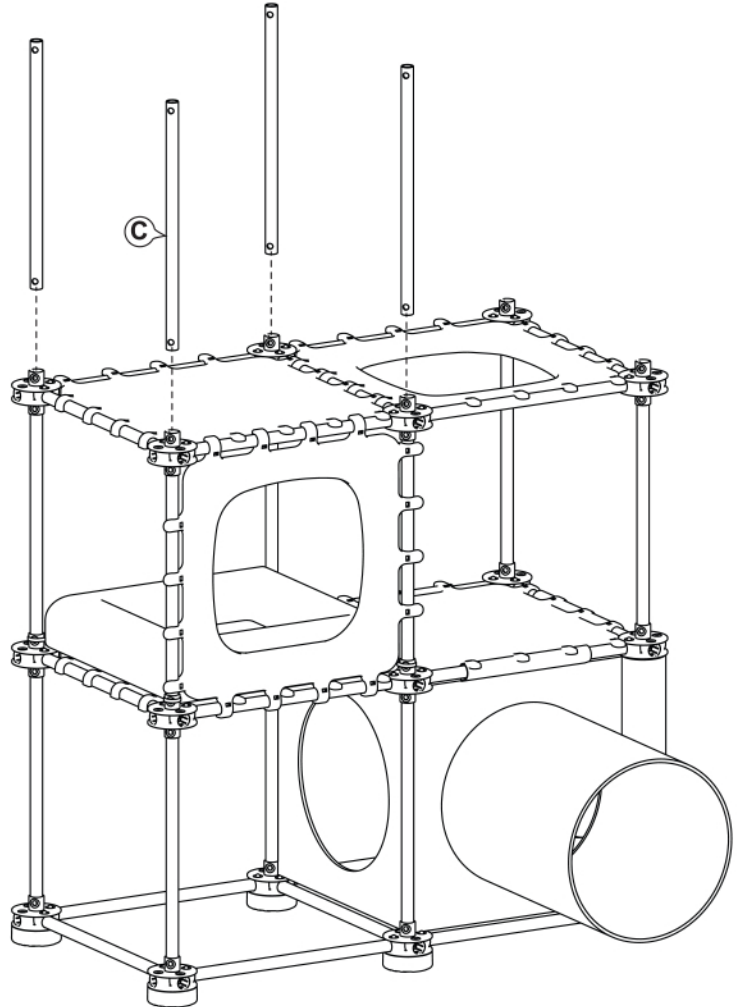


### TIP C

Ensure **Panels (G&H)** have clips and fingers oriented the same way as the panels in Step 6.

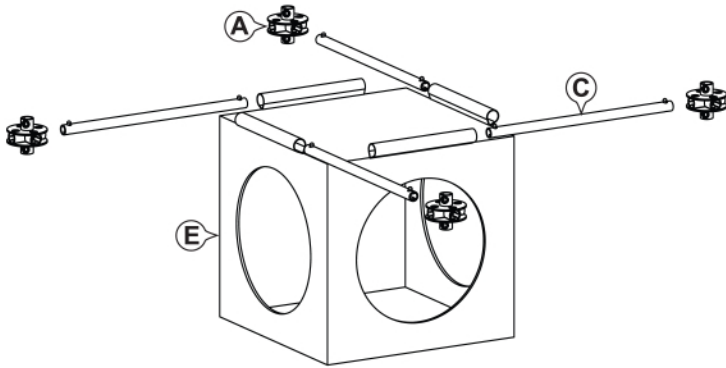
## Step 12

Insert **Pipes (C)** into **Joints (A)** as shown.



### Step 13

Using **Cube (E)** slide **Pipes (C)** through sleeves. Insert **Pipes (C)** into **Joints (A)** as shown.

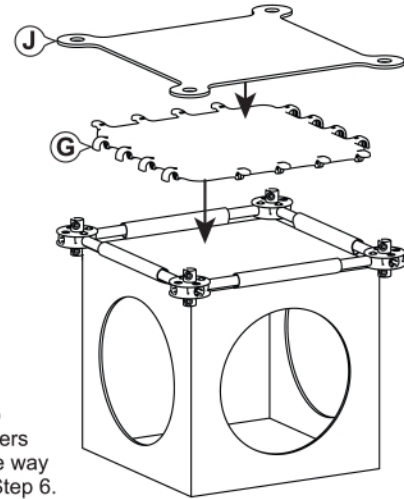


#### TIP A

Ensure all holes in **Joints (A)** are oriented the same way as joints in Step 1.

### Step 14

Snap **Panel (G)** onto **Pipes (C)** and push down to lock panel in place. Place **Felt Platform (J)** onto panel as shown.

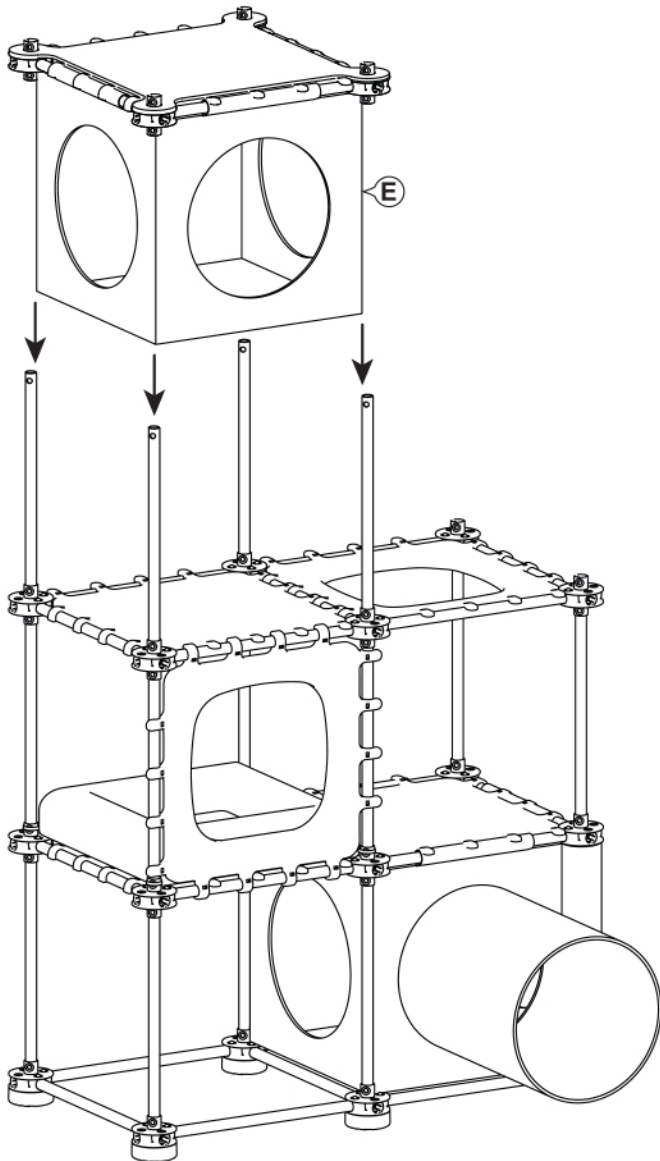


#### TIP C

Ensure **Panel (G)** has clips and fingers oriented the same way as the panels in Step 6.

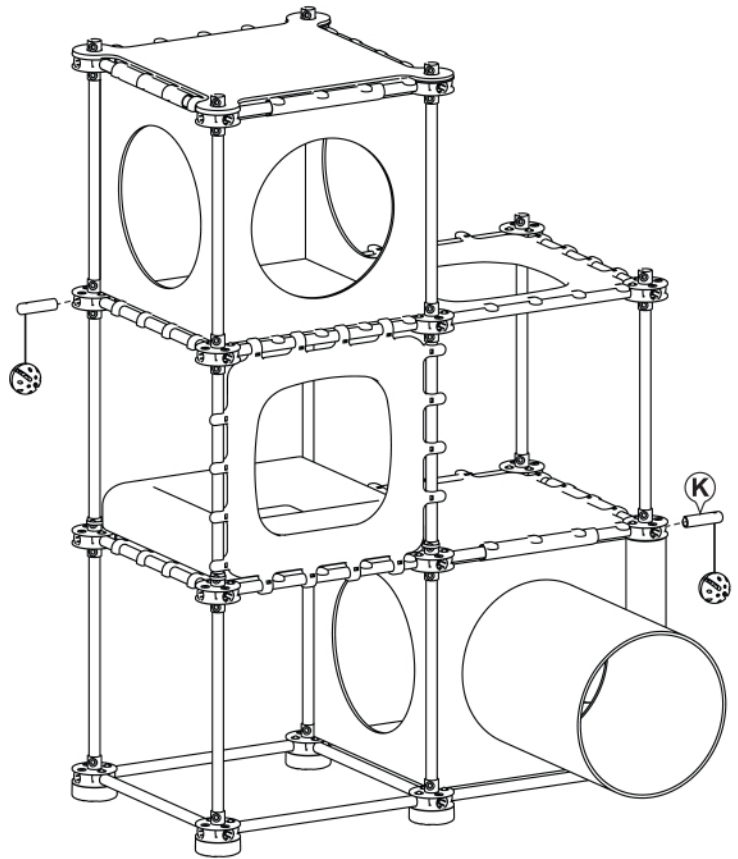
### Step 15

Attach **Cube (E)** to completed structure. Insert **Pipes (C)** into **Joints (A)** as shown.



### Last Step

Attach **Toys (K)** into any open **Joints (A)** as shown.



Because every cat is different, it is important to monitor your cat's behavior with this product. If at any time your cat damages this item, or any portion of this item becomes damaged, remove the damaged portion or discontinue use of the product.